



Once the required controls are installed the system is fully stand-alone requiring no central controller. Full bi-directional communication not only simplifies PulseWorx scene programming but also provides verification of any UPB signal sent, further bolstering the system's capabilities and reliability.

Incorporating features usually found in radio-frequency and hard-wired systems costing tens of thousands of dollars, PulseWorx brings the price of elegant lighting down to a fraction of the cost of such systems. All products are Made in the USA, designed with quality parts, and subjected to extensive testing and quality control that allow PCS to offer an industry leading 5-year warranty and a money back guarantee



The PulseWorx™ product line provides the ultimate in convenience and affordable luxury at an affordable price.



19201 Parthenia St. Suite J
Northridge, CA 91324



Lighting Control that Works.



Beautiful homes deserve beautiful lighting.



The PulseWorx™ Lighting Control line is the most complete powerline-based lighting control system. This system gives you one touch control over a home's lights via keypads, dimmers, switches and plug-in receivers inside and outside your home. Since the PulseWorx™



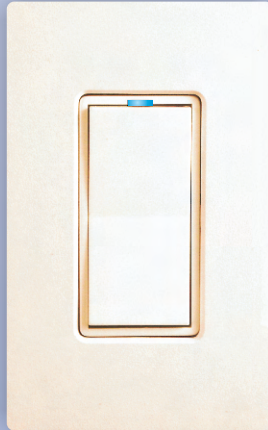
products are designed to be installed using only existing house wiring they are ideal for retrofit, remodel and new construction applications.

PulseWorx™ products utilize the patented UPB™ technology, invented by PCS,

providing the most reliable powerline controls available today! By utilizing UPB™ technology the dimmers and keypads create dramatic scenes without having to run additional wiring—providing builders, contractors and integrators a affordable, flexible lighting control solution. Each PulseWorx system will control up to 250 lights or devices in a home and also allow up to 250 different lighting scenes. Each Keypad can control 6 or 8 scenes or individual fixtures. Each Wall Switch, Dimmer or Plug-in Module can be a member of up to 16 scenes or groups.

DIMMER SWITCHES

Wall-Mounted Dimmer Switches are the workhorse of any lighting system. These UPB powered wall dimmers replace existing switches.



PulseWorx Dimmers can be controlled remotely when used in combination with wall-mount, desktop or timed-event controllers, or manually with the rocker providing on, off, bright, and dim control.

Features

- Available in 600W, 1000W, 1500W, and 2000W
- Stores up to 16 pre-set Scene Levels
- Variable Fade Rates: from instant on to 1 hour
- Programmable Pre-set ON level
- Cool Blue/Red Status Nightlite LED
 - Auto-off Timer: program between 1-240 minutes
 - All dimmers can be controlled by inexpensive auxiliary 'Remote' switches
 - Electronic Low-Voltage switch available in 300W and 500W
 - Non-dimming setting for fluorescent fixtures
 - Heavy-duty high current output circuit
 - Made in the USA



KEYPAD CONTROLLERS

Lighting conditions are easily set and controlled anywhere in the home with PulseWorx wall and desktop controllers.



A single touch of a button can adjust lights to a preset scene: from a romantic, intimate dinner to a cool party scene. The home-owners are in complete control of their lighting.

Features

- Available in 6 or 8 Button, Wall-Mount and Desktop Configurations
- 6-button devices incorporate IR Remote Control and Bright/Dim Control
- Programmable: control over 250 scenes or devices
- Adjustable brightness LED's for visual feedback
- Keypad cool blue backlighting

Available Colors:

- White
- Almond
- Ivory
- Gray
- Brown
- Black



LOAD CONTROLS

For situations when devices such as floor lamps, table lamps or other plug-in devices need to be controlled, PulseWorx Plug-in and Fixture Modules provide the ideal solution.

- **Dual-Channel Module:** Incorporates two independent channels for up to 800W of total power and two non-controlled outlets.
- **Single Channel Module:** Available in both Dimming 400W and Non-dimming 12A Versions
- **Wire-in Fixture Modules:** Available in both Dimming 400W and Non-dimming 20A versions



TIMER CONTROLLER

The TEC stores events to trigger scenes or individual fixtures. Each event can be configured to occur, daily, during the work week, on weekends, or specific days of the week. Event times can be specified as absolute times or relative to sunrise or sunset

Features

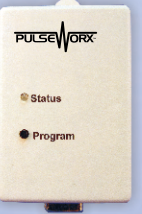
- Stores up to 20 individual timed events
- Security Mode - triggers random events to make home appear occupied
- Programmed from UPStart
- 10 year battery backup
- California Title 24 compliant



INTERFACE DEVICES

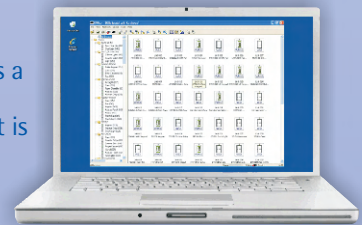
Interface devices allow for added functionality to a PulseWorx lighting system.

- **Powerline Interface Module:** RS232 and USB versions to connect a PC or frontend controller
- **Input Control Module:** Trigger events from contact closure inputs
- **Doorbell Control Module:** Senses a doorbell current to trigger any UPB event or scene
- **Telephone Control Module:** Senses a telephone ring to trigger any UPB event or scene
- **X-10 to UPB Module:** Convert X-10 commands to UPB commands
- **Output Control Module:** control low voltage devices; sprinklers, drapes, garage doors or produce isolated contact closures for other control devices



SOFTWARE

UPStart setup software is a powerful Windows® software application that is used to unlock all of the advanced features of your PulseWorx Lighting Control System and all compatible Universal Powerline Bus (UPB™) devices.



Features

- Configure all features of devices both online & offline
- Perform Network and Device Functional Testing
- Run communication and diagnostic tests for both devices and the entire network
- Verify system configuration and programming
- Save all configuration information to a file for easy backup and for restoring configurations
- Log all transmissions for testing and troubleshooting